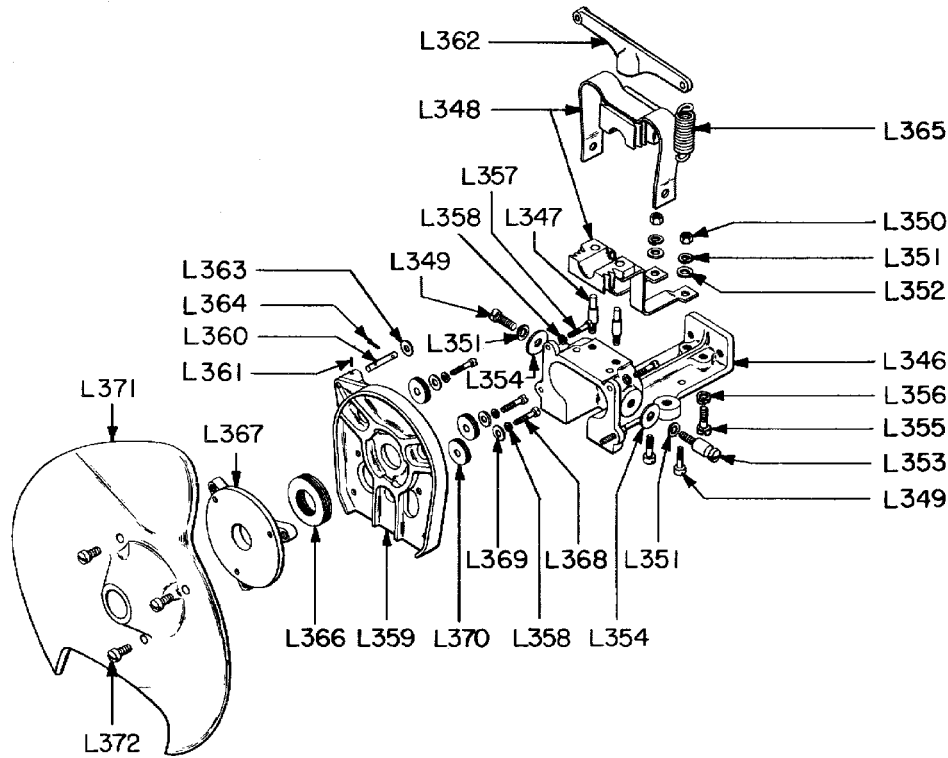


Page 2 - GE positive head subassembly



Ref No.	Skyview No.	Price (US dollars)	Description
Lc1	6976652G49	625.00	GE Positive head sub assembly
L346	G508	175.00	Casting
L347	G509	6.00	Stud
L348	G505	110.00	Positive Brushes Upper & Lower
L349		.50	Screw 1/4"-20, 5/8" fil. head
L350		.50	Nut, 1/4-20, Hex S. S.
L351		.50	Lockwasher 1/4" S. S.
L352		.50	Washer 1/4" S. S.
L353	G510	6.00	Stud Spring Holder
L354		.50	Washer 1/4" S. S.
L355		.50	Screw, 1/4-20, 5/8" fil. head
L356		.50	Lockwasher 1/4" S.S.
L357		.50	Screw, 10-24, 7/16" fil. head
L358		.50	Lockwasher #10 S.S.
L359	G504	95.00	Nose Plate
L360		2.50	Pin
L361		.50	Pin Taper, No. 5/0, 3/8" t.s.
L362	G506	12.50	Lever Spring
L363		.50	Washer#10 S.S.
L364		.50	Pin, Cotter, 1/16 x 3/8"
L365	G507	5.00	Positive Brush Spring
L366	G503	5.00	Washer Insulating
L367	G502	40.00	Nose, Positive
L368		.50	Screw 10-24, 7/8" fil. head
L369		.50	Washer 13/64 x 5/8 S.S.
L370	G511	2.00	Washer Mica Insulating 3/16 hole
L371	G501	75.00	Cap Positive Nose
L372		.50	Screw 12-24, 1/2" fil. head

Copyright 1997 by National Event Marketing, Inc. Reproduction in whole or part is forbidden without the written consent of National Event Marketing, Inc.

All prices subject to change without notice

National Event Marketing, Inc. d.b.a. Skyview Company
2810 Thousand Oaks, Suite 237, San Antonio, Texas 78232
Web: www.sky-view.com E-Mail: sales@sky-view.com
Phone (USA): 800.562.8439 Phone (International): 011.95.210.681.8500